

SIMA·PERU

SHIPYARDS



TECHNOLOGY AND DEVELOPMENT



TECHNOLOGY AND DEVELOPMENT



Servicios Industriales de la Marina, SIMA PERU S.A. is a company which specializes in the construction and repair of vessels, industrial maintenance, construction of steel structures, specialized electronic systems and the manufacture of light weapons.

With over 50 years of permanent activity, SIMA is one of the leading industrial corporations in Peru and also in the international markets in which it competes.

Its shipyards are located in Callao and Chimbote, at the Pacific Ocean and also in Iquitos at the Amazon River, gives versatility and allows SIMA PERU to build and repair small craft and/or large merchant vessels of any type up to 48,000 DWT. SIMA PERU offers the maritime and industrial world high quality works, good delivery time and competitive prices, always applying the most advanced technology.





CONSTRUCTIONS OF LARGE MERCHANT VESSELS



Our operations are performed by a highly qualified staff, professionals and technicians, with experience in the naval industry. SIMA CALLAO has two building berths: One for vessels up to 27,000 DWT and the other for vessels up to 48,000 DWT, the latter has the possibility of expansion for PANAMAX type vessels. Our work shops are equipped with high technology tools and machines.



MAIN CONSTRUCTIONS OF LARGE MERCHANT VESSELS MADE BY SIMA CALLAO

- 2,400 tons Missile Frigate built for the Peruvian Navy.
- Tankers from 6,000 to 25,000 DWT.
- Bulk carriers of 25,000 DWT.
- Multi-purpose vessels of 25,000 DWT.
- Scientific research vessels.
- Cargo vessels of up to 13,000 DWT.





VESSELS FOR THE FISHING INDUSTRY

Perú has been always a fishing country, ancient peruvians fished at the sea, rivers and lakes, leaving an important tradition of fishing vessels construction, the one which has been continued and improved by SIMA PERU in

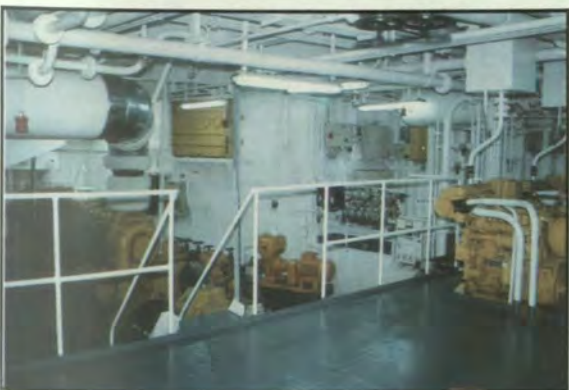
accordance with the modern techniques, patterns and requirements of this important industry. We have built more than 500 fishing vessels.



We have purse seiners, trawlers, refrigerated tuna boats, tug boats, barges, etc. Every one was designed taking in account the type of fishing to be performed and each one has the adequate facilities for accommodation as well as communication and navigation equipment and detection systems. All of this made by SIMA CALLAO and SIMA CHIMBOTE shipyards.



SIMA has participated in the design and construction of launches, patrol boats, tugs, hospital ships, motor barges, barges and speed boats, all of which have been built in our 3 shipyards.





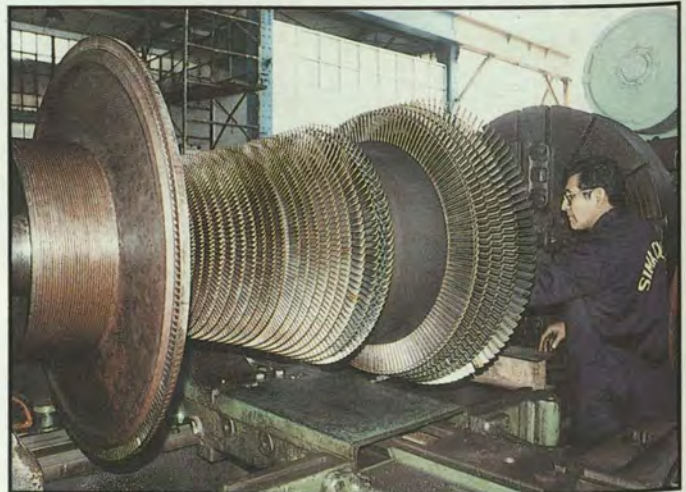
VESSELS AND REPA

SIMA has repair workshops which cover all types of naval and industrial engineering projects.

In Callao, SIMA has one dry dock and three floating docks to attend vessels of up to 25,000 DWT and meet the repair requirements of the shipowners.

In Chimbote, there are repair installations for craft up to 1,200 DWT. These installations include a synchro-lift and a yard for more than 30 vessels.

In Iquitos, we have a floating dock with a lifting capacity of 600 tons and fully equipped repair workshops, as well as two building berths, each one for vessels up to 500 DWT.

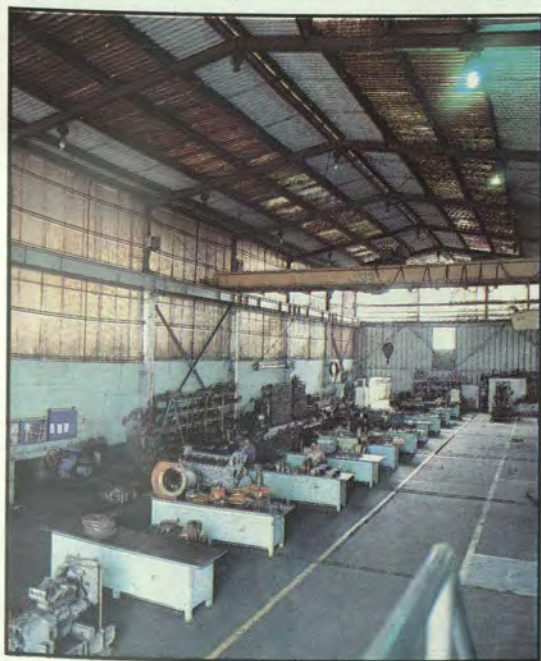


INDUSTRIAL IRING

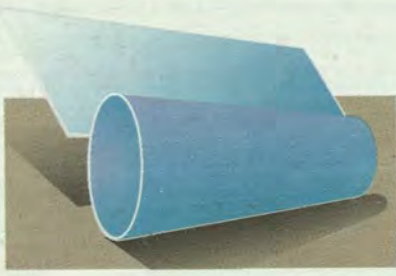


SIMA Peru has more than 40 workshops, fully equipped to provide specialized structural repair services such as : turbines, engines, boilers, grinding work, laboratories, heat exchangers, electricity, electronics, pressure piping, special welding, manufacture and assembly work, carpentry, machine assembly, naval repairwork, sandblasting, painting and careening etc. All of our operations, services, controls, etc. are performed by highly qualified personnel trained locally or abroad. Regular evaluations training courses and post graduated courses are usual for our personnel, since our prestige rests on skilled and motivated human resources.

This has led us to be awarded with a Class «A» shipyard qualification by the world's main insurance companies, as a recognition to decades of progress and experience and facilities we offer to shipowners all over the world.



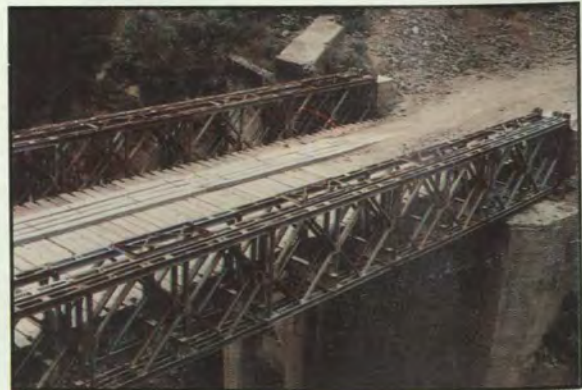
STEEL STRUCTURES SHOPS



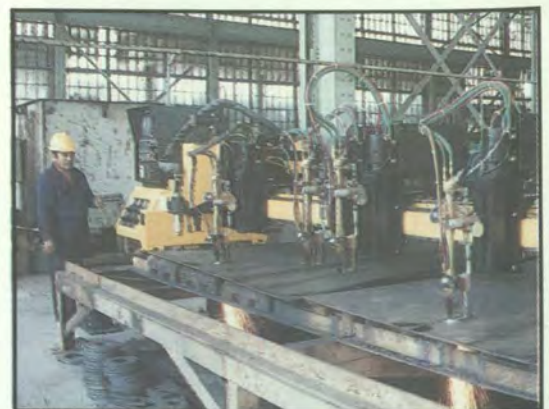
Additionally Chimbote SIMA has developed a steel processing works capable of producing large steel structures. This complex is complemented by additional SIMA workshops.

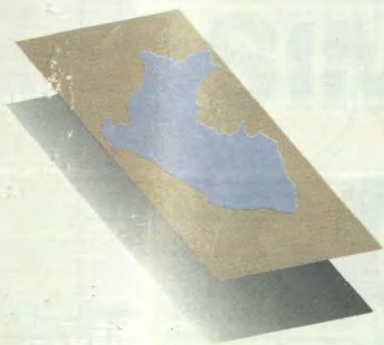
SIMA has built the highest number of bridges in Peru and has also manufactured the greatest volume of large diam. pressure piping for hydraulic , energy and food cultivation projects.

Within this line of products, SIMA has manufactured sluice gates for HEPs and irrigation projects, in addition to metal tanks and reservoirs for potable water, and foam and oil recuperator tanks etc. It has also manufactured river jetties, high tension electricity pylons, factories, bridge cranes, train wagons etc.



**SIMA CALLAO, SIMA CHIMBOTE
AND SIMA IQUITOS all have
installed capacity to manufacture
heavy steel structures
and large engineering
components.**





SIMA'S PRODUCTION CENTERS

SIMA CALLAO: Our largest shipyard, for high tonnage shipbuilding and repairs, is located in the Pacific Coast.

It has an installed capacity for fabrication of steel structures of any type.

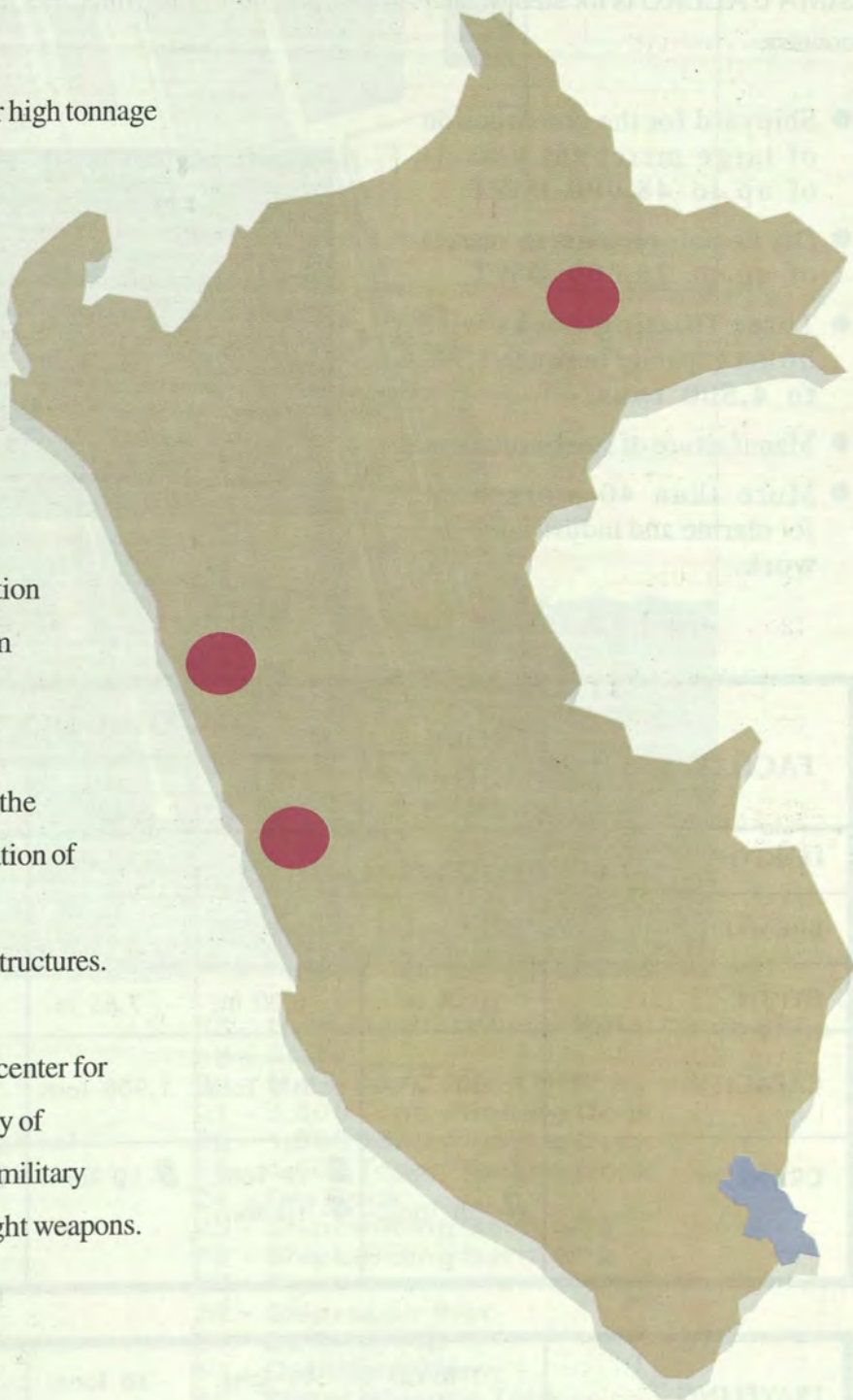
SIMA IQUITOS: Located on the Amazon River; our shipyard is for the construction and repair of river vessels.

At the same time, it has capacity for fabrication of steel structures for fluvial ports, petroleum platforms, etc.

SIMA CHIMBOTE: It is a shipyard for the construction of small craft, as well as reparation of large vessels.

Also it has capacity for fabrication of steel structures.

SIMA ELECTRONICA: A specialized center for the design, repair, manufacture and assembly of electronic systems for both commercial and military purposes. It also manufactures and repairs light weapons.





SIMA CALLAO

SIMA CALLAO is located in the Port of Callao, 14 kms from Lima, the capital of the country.

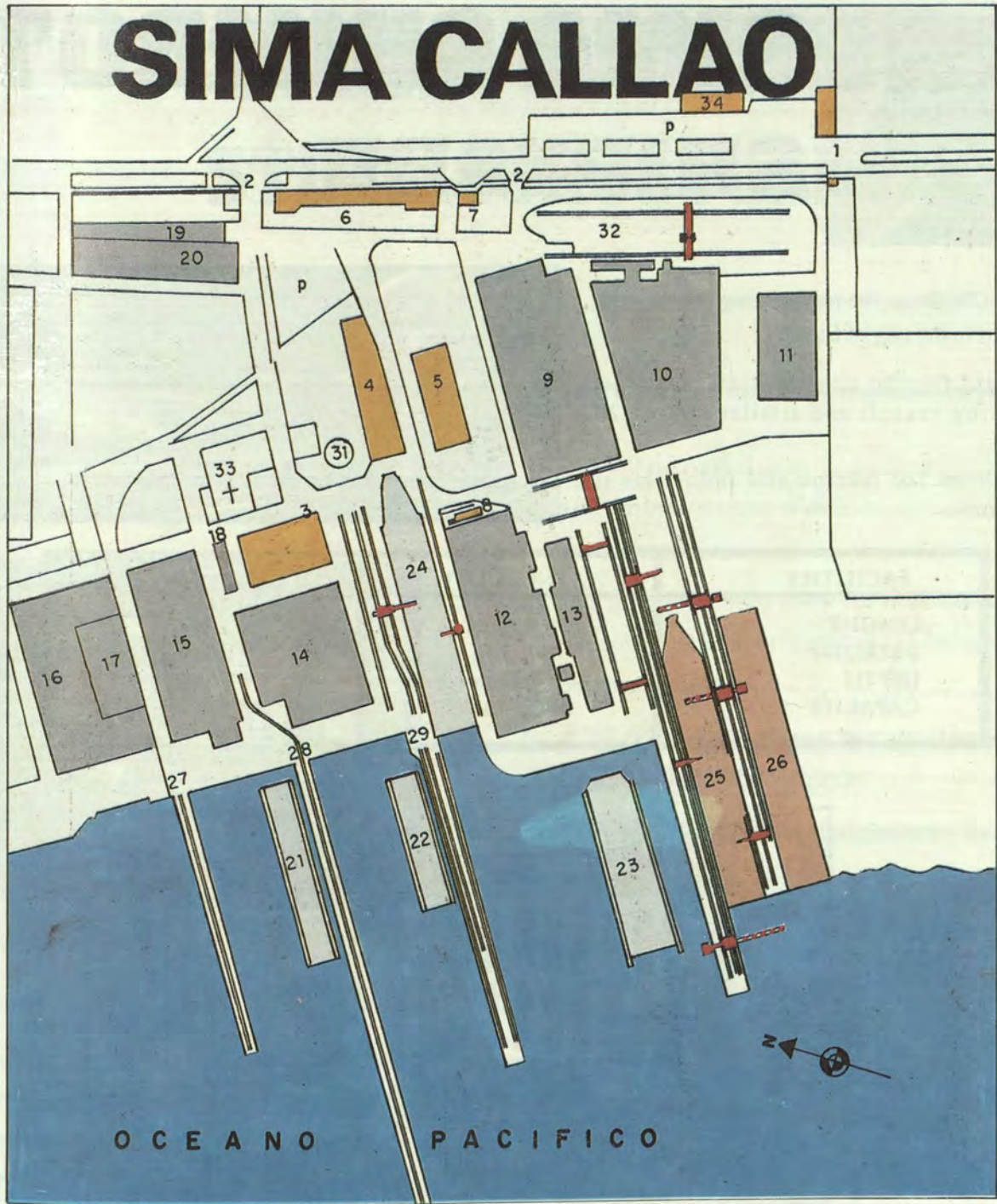
- Shipyard for the construction of large merchant vessels of up to **48,000 DWT**.
- Dry dock for repairs to vessels of up to **25,000 DWT**
- Three floating docks with lifting capacity between **1,900 to 4,500 tons**.
- Manufacture of steel structures.
- More than 40 workshops for marine and industrial repair work.



FACILITES	DRY DOCK	FLOATING DOCKS			BERTHS	
		ADF 104	ADF 106	ADF 107	N.1	N.2
LENGTH	194.85 m.	115.80 m.	87.84 m.	125.96 m.	203 m.	261 m.
BREADTH	26.8 m.	23.30 m.	13.72 m.	15.5 m.	30 m.	36 m.
DEPTH	10.06 m.	6.00 m.	7.85 m.	10.35 m.		
CAPACITY	25,000 TPM	4,500 Tons.	1,900 Tons.	3,800 Tons.	27,000 TPM	48,000 TPM
CRANES	1 - 45 Tons. 2 - 38 Tons.	3 - 10 Tons. 4 - 10 Tons.	5 - 10 Tons.	6 - 10 Tons.	7 - 120 Tons. 8 - 45 Tons. 9 - 15 Tons.	10 - 8/15 Tons. 11 - 45 Tons. 12 - 15 Tons.

TRAVELING CRANES	70 Tons.	41 Tons.	38 Tons.	13.6 Tons.	6 Tons.	
	45 Tons.	40 Tons.	25 Tons.	13.6 Tons.	5 Tons.	
	41 Tons.	40 Tons.	25 Tons.	10.0 Tons.	5 Tons.	

SIMA CALLAO



- | | |
|--|--|
| 01 - Main Gate | 18 - Heat Treatment and Metal Clads Shop |
| 02 - Entrance | 19 - Stores |
| 03 - Main Offices | 20 - Materials Control Office |
| 04 - Infirmary, Social Assistance,
Library, Auditorium, Training School | 21 - 3,500 Tons. Floating Dock |
| 05 - Shipbuilding Offices | 22 - 1,900 Tons. Floating Dock |
| 06 - Cashier, Logistics, Banks | 23 - 4,500 Tons. Floating Dock |
| 07 - Labor Office | 24 - Dry Dock |
| 08 - Safety Office | 25 - Shipbuilding Berth N° 1 |
| 09 - Plate Shop | 26 - Shipbuilding Berth N° 2 |
| 10 - Auxiliary Shops and Stores | 27 - Pier |
| 11 - Stores | 28 - Shiprepair Pier |
| 12 - Shiprepair Shops | 29 - Docking Pier |
| 13 - Shipbuilding Shop | 30 - Outfitting Pier |
| 14 - Machine Shops | 31 - Water Storage Tank |
| 15 - Electrical Shop | 32 - Plate Store |
| 16 - SIMA ELECTRONICA | 33 - Chapel |
| 17 - SIMA CEFAR | 34 - Cafetería |
| | p. Parking Lot |

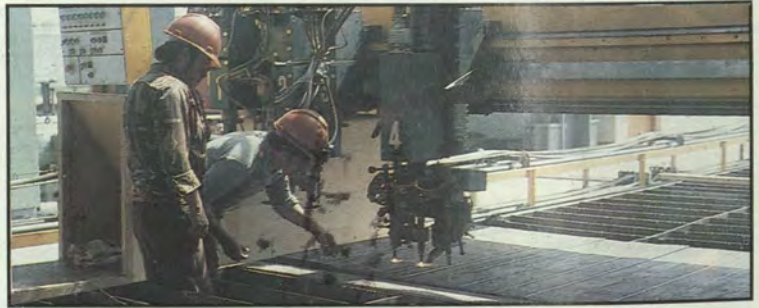


SIMA CHIMBOTE

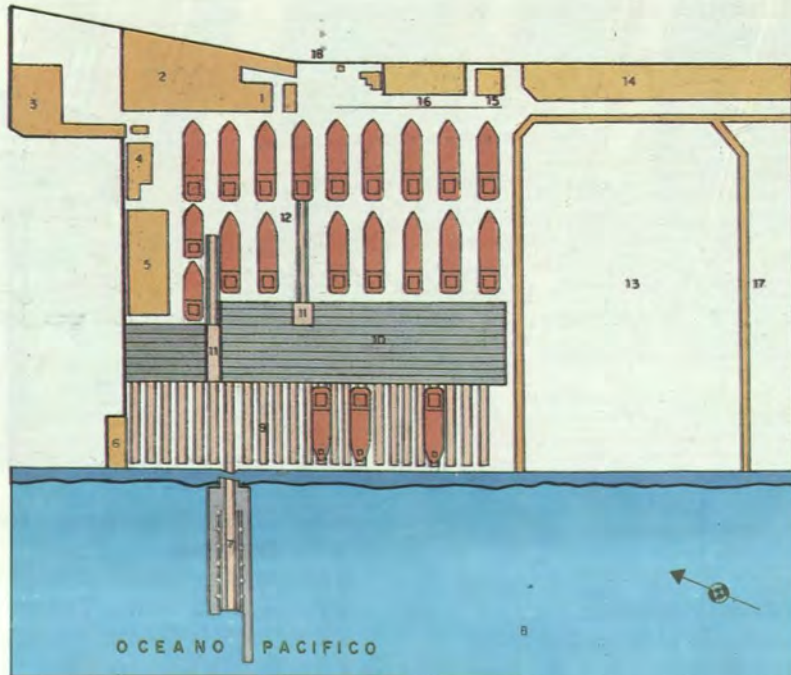
SHIPYARD

Located in Chimbote, the main fishing port of Peru, 440 kms. from the city of Lima.

- Shipyard for the construction and repair of fishing vessels and similar up to 1,200 DWT.
- Workshops for marine and industrial repair work.



FACILITIES	SYNCROLIFT	TRAVELING CRANES
LENGHT	64.0 m.	45 Tons.
BREADTH	12.2 m.	18 Tons.
DEPTH	5.5 m.	15 Tons.
CAPACITY	1000 Tons.	12 Tons.



SIMA CHIMBOTE

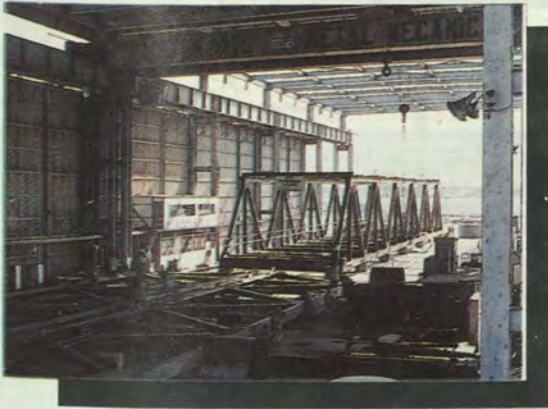
- 01 - Offices
- 02 - Shops
- 03 - Main Store
- 04 - Shops
- 05 - Shops
- 06 - Shops
- 07 - Syncrolift
- 08 - Pacific Ocean
- 09 - Parking Places

- 10 - Transfer Zone
- 11 - Transfer Carriage
- 12 - Parking Places on Shipconstruction Area
- 13 - Assembly Area
- 14 - Cloak Room - Maintenance Shop
- 15 - Poger House
- 16 - Cafeteria - Training Center
- 17 - Open Sotage Yard
- 18 - Entrance

SIMA CHIMBOTE

STEEL STRUCTURES SHOP

This steel processing shop is the largest and most modern in the country, its modern machinery and equipment can process 7,200 tons of steel per year.



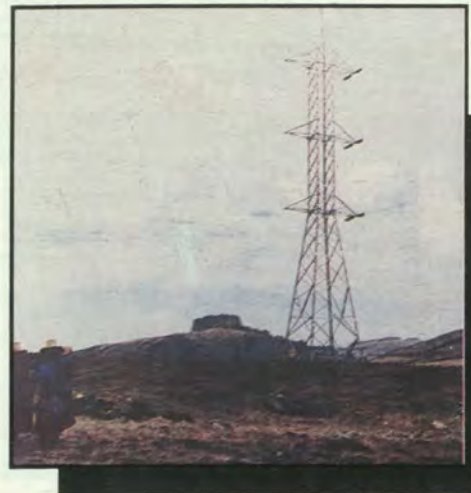
Main Activities

Construction of all types of metal structures, such as factories, bridge cranes, mono-rails and bi-rails, gantry bridges, steel framework and modules, electricity transmission line pylons, pressure piping for HEPs, storage tanks for all types of fluids, pump units for oil wells etc.



SIMACH has the following installed capacity:

- a). A 3600 m² roofed shop for boilerwork, including a 30 ton bridge crane with 28 m. span, among other machinery.
- b). A 1,900 m² roofed shop for mechanical work, including a 15 ton bridge crane -17m span among other machinery.
- c). A 27,000m² open area to manufacture steel structures and other projects.
- d). Sufficient lifting and handling capacity for pieces up to 60 tons.
- e). A roller to handle steel plates up to 80mm thick.
- f). Machinery, tools and similar to work in steel.
- g). Automatic oxy-acetylene cutting equipment and MIG type equipment.





SIMA IQUITOS

Located in the Amazon River on left side of the Nanay River, affluent of the Amazonas River.

- Shipyard designed for the construction and repair of fluvial vessels.
- Floating Dock of 600 Tons. of lifting capacity
- Workshops for marine and industrial repairwork

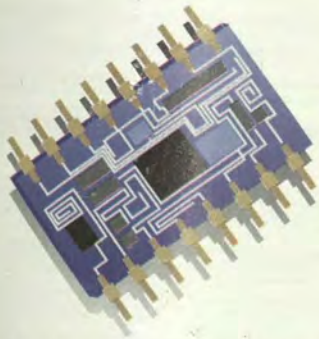


FACILITIES	FLOATING DOCK	SLIPWAY 1	SLIPWAY 2	BERTH
LENGHT	52.80 m.	50 m.	80 m.	40 m.
BREADTH	14.85 m.	10 m.	15 m.	12 m.
DEPTH	7.74 m.			
GRADIERT		15°	5°	5°
CAPACITY	600 Tons.	300 Tons.	1,500 Tons.	500 Tons.



SIMA IQUITOS

- 01 - Shipyard's Main Gate
- 02 - Electrical Shop
- 03 - Drafting Room
- 04 - Oxigen Plant
- 05 - Carpentry Shop
- 06 - Prefabrication Shop
- 07 - Slipway N° 1
- 08 - Slipway N° 2
- 09 - Welding Store
- 10 - Galley and Messroom
- 11 - Naval Personnel Messroom
- 12 - Dock's Mechanical Shop
- 13 - Powerhouse
- 14 - Propeller's Shop
- 15 - Plate Shop
- 16 - Administrative Building
- 17 - Management Building and Offices
- 18 - Machine Shop
- 19 - General Store
- 20 - Naval Personnet Quarters
- 21 - Files
- 22 - Engine Shop
- 23 - Paint Shop
- 24 - Fresh Water Tank
- 25 - Fresh Water Tank and Filter
- 26 - Fresh Water Tank and Filter
- 27 - Fuel Oil Tank
- 28 - 150 Tonsd. Berth
- 29 - Winch
- 30 - Assembly Area
- 31 - 4 Tons. Tower Crane
- 32 - Tower Crane
- 33 - Foundry Shop
- 34 - Floating Dock



SIMAE ELECTRONICA

This specialized production center manufactures electronic systems and weapons using the very latest technology.

Highly skilled engineers and technicians who work in the manufacture of electronic and computerized systems, sonars, radar, communications and automatic control systems represent the main resources of SIMAE.



The installed capacity of our equipment and instruments is frequently updated to ensure our users quality and reliability.

As recognition of its leadership in this highly specialized field, SIMAE is currently the Authorized Technical Service of transnational companies such as RACAL and Japan Radio Co. (JRC).



We offer specialized technical advice and develop projects which range from repairs and substitution of electronic boards up to the development of complete systems.

One of our most outstanding features is the rapid and efficient attention we provide to our clients both in Peru and abroad.



SIMAE is the first and only Arms Manufacturing center in the country. Its production line includes sub-machine guns, semi-automatic pistols, flare pistols and shotguns.

SIMA PERU HEADQUARTERS

Avda. Contralmirante Mora 1102
Base Naval, Callao, Perú
Telephone: (51-1) 465-3420 / 465-5541
Fax: (51-1) 465-7966
des@sima-ast.com.pe

MARKETING MANAGEMENT

Avda. Contralmirante Mora 1102
Base Naval, Callao, Perú
Telephone: (51-1) 465-7357 / 429-1081
Fax: (51-1) 465-0664
gc@sima-ast.com.pe

SIMA CALLAO

Avda. Contralmirante Mora 1102
Base Naval, Callao, Perú
Telephone: (51-1) 465-7182
Fax: (51-1) 465-4273 / 465-5324
jesimac@-ast.com.pe

SIMA IQUITOS

Avda. La Marina 1177
Punchana, Iquitos, Perú
Telephone: (51-94) 23 -1070
Fax: (51-94) 23 -5746

SIMA CHIMBOTE Shipyard

Avda. Los Pescadores s/n
27 de Octubre, Chimbote, Perú
Telephone: (51-44) 32-4601
Fax: (51-44) 32-5235

SIMA CHIMBOTE Steel Structures Shop

Avda. Pardo s/n, 1ra. Cdra.
Sector La Caleta, Chimbote, Perú
Telephone: (51-44) 32-3581 / 32-2155
Fax: (51-44) 323581

SIMA ELECTRONICA

Avda. Contralmirante Mora 1102
Base Naval, Callao, Perú
Telephone: (51-1) 429-4699 / 429-1400
Fax: (51-1) 465-718
eco@sima-ast.com.pe

SENA PANA
RECONSTRUCTION

Av. Carhuaz 1307 - Breña
Lima 18100
Tel: 432-5825 431-4989
www.pida.com.pe

CONSTRUCTION MANAGEMENT

Av. Carhuaz 1307 - Breña
Lima 18100
Tel: 432-5825 431-4989
www.pida.com.pe

SENA CALLES

Av. Carhuaz 1307 - Breña
Lima 18100
Tel: 432-5825 431-4989
www.pida.com.pe

SENA ISERTOS

Av. Carhuaz 1307 - Breña
Lima 18100
Tel: 432-5825 431-4989
www.pida.com.pe

SENA CRIBESTO

Av. Carhuaz 1307 - Breña
Lima 18100
Tel: 432-5825 431-4989
www.pida.com.pe

SENA CRIBESTO

Av. Carhuaz 1307 - Breña
Lima 18100
Tel: 432-5825 431-4989
www.pida.com.pe

SENA CLAS

Av. Carhuaz 1307 - Breña
Lima 18100
Tel: 432-5825 431-4989
www.pida.com.pe

PIDA Impresiones s. r. l.
Jr. Carhuaz 1307 - Breña
Telefs.: 432-5825 431-4989

